

De-Carbonising Waste Management.

Using the tools to help the analysis of your clients carbon journey

Starting at the end, seeing an opportunity to eliminate waste before it's even created is the key to an evolving Circular Economy. By analysing your clients waste journey to produce accurate reporting is vital for organisations to monitor their environmental performance and journey in becoming Net Zero. Whether that's clinical, hazardous, recycling waste or anything else, we deliver an innovative approach in analysing your waste management services to ultimately minimise your waste and carbon impact.

powered by...

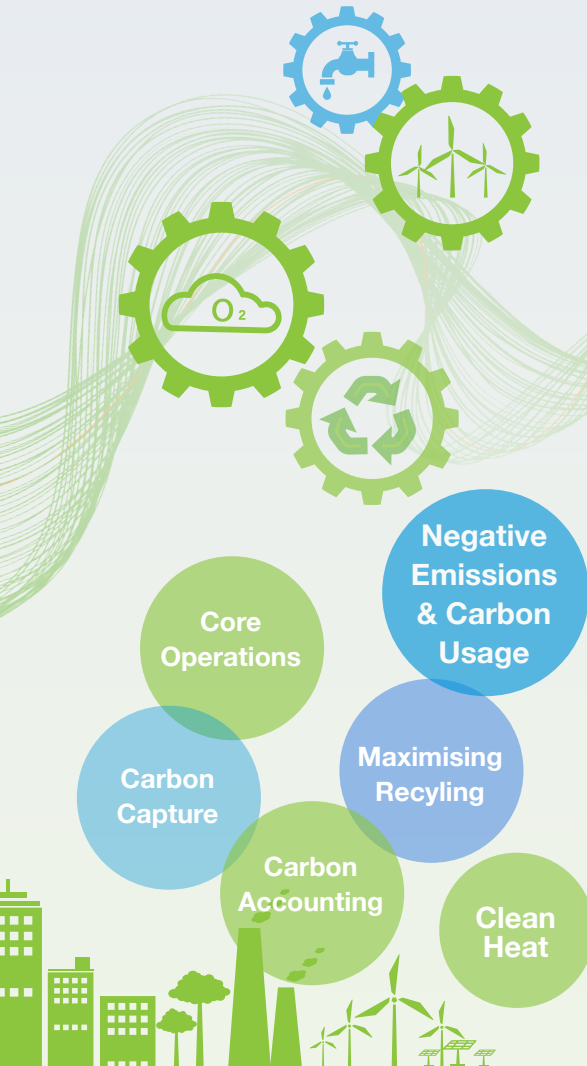
The logo consists of the letters 'SWS' in a large, bold, green font. Below it, the words 'sommerswastesolutions' are written in a smaller, blue, sans-serif font.

SWS
sommerswastesolutions

In partnership with

The logo features a red circular icon with a white dot in the center, resembling a stylized 'a' or a signal. To its right, the word 'auditel' is written in a blue, sans-serif font.

 **auditel**



Low Carbon for your business



If you're a large business with Net Zero commitments, now is the time to put those pledges into practice. No matter where you are on your sustainability journey, we have the expertise you need to reduce your carbon footprint within your set timeline.

Reduce: Energy efficiency and flaring minimization are top actions toward mitigating climate change, as is fossil fuel reduction through substitution with lower carbon energy sources like renewables, hydropower, nuclear and bioenergy.

Recycle: CO₂ is chemically transformed into new products such as fertilizer or cement, or other forms of energy such as synthetic fuels.

Reuse: CO₂ has value and using innovative technologies to capture it means it can be reused as useful products, such as fuels, bioenergy, chemicals, building materials, food and beverages.



Working in partnership with Auditel, SWS can guide you and give you the relevant tools to help you reduce your carbon footprint by appropriate, relevant and robust carbon accounting.



Remove: Using technology to capture and store CO₂ is an important way to achieve large-scale reduction of emissions, while increasing photosynthesis by planting flora also contributes toward reduction.



0333 577 7442

info@sommerswastesolutions.com
www.sommerswastesolutions.com

